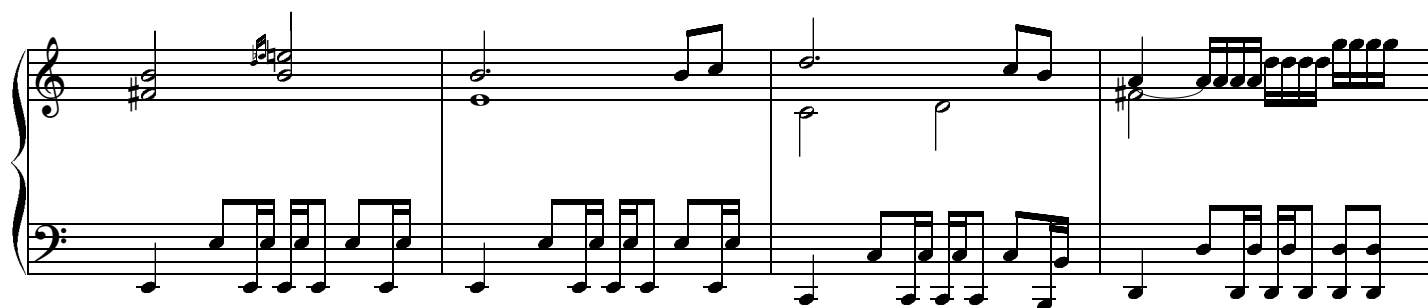
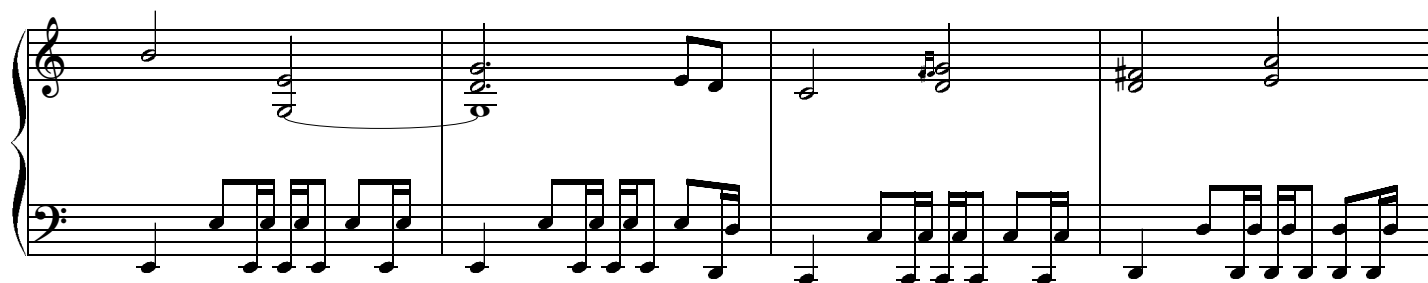
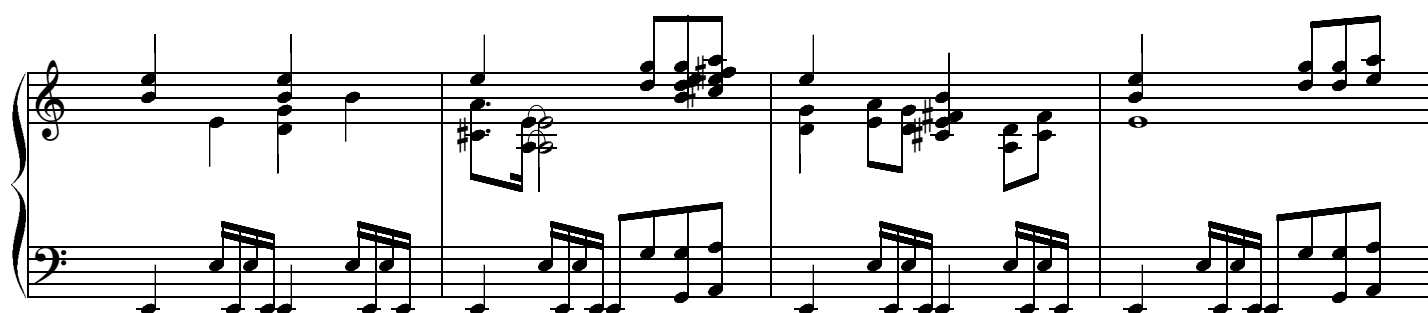
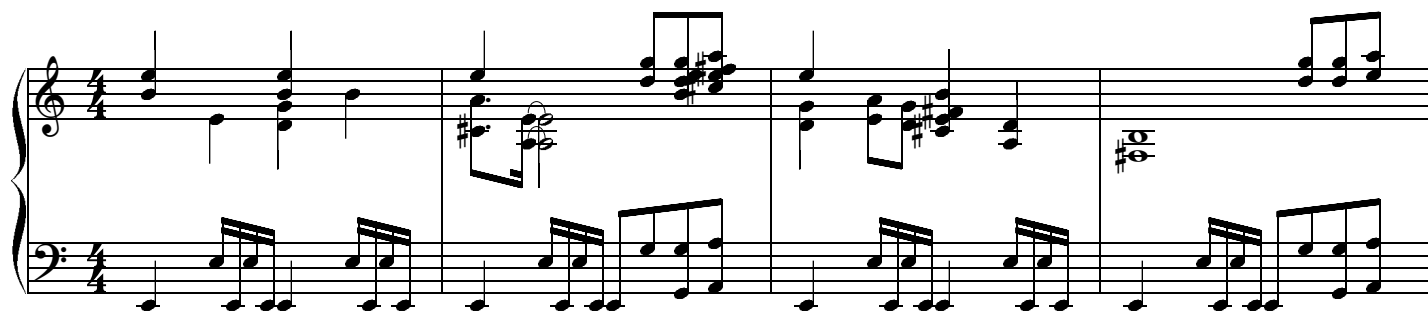
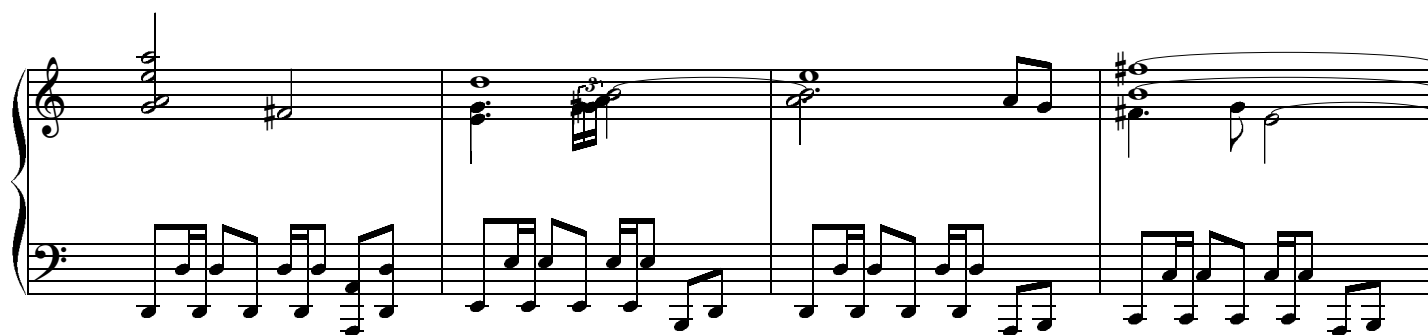
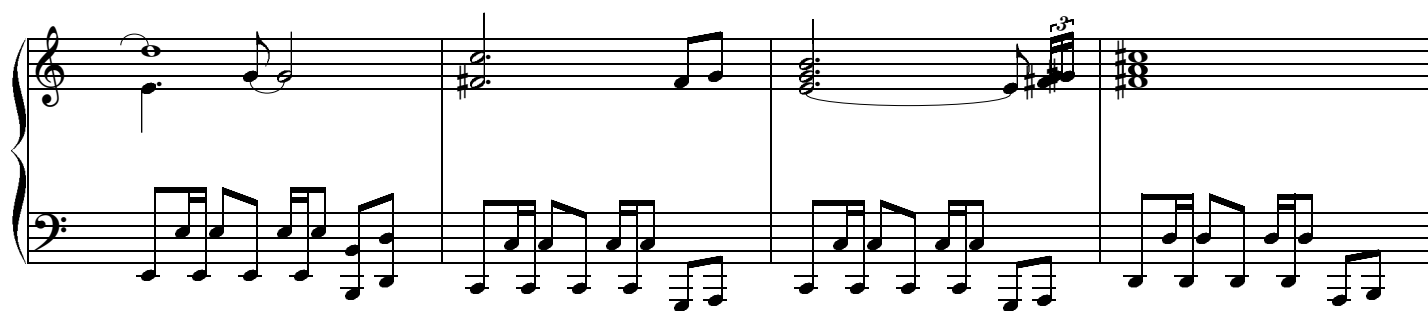
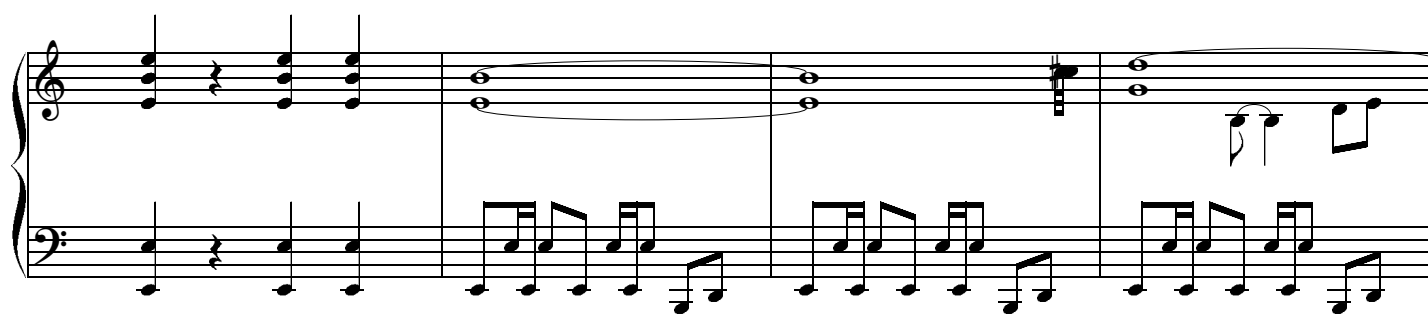
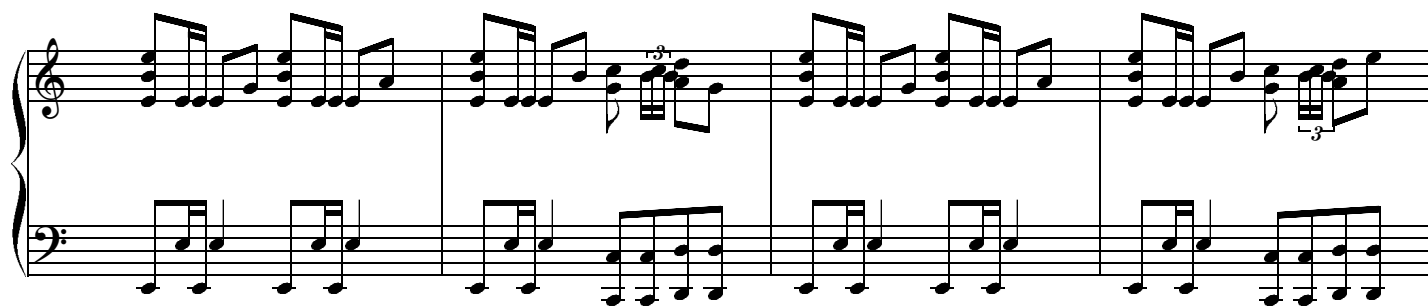


# 斑鳩 Boss

編曲：まかーる

♩=180





A musical score for the song 'The Rose Tree'. It features a treble and bass staff. The treble staff has a key signature of one sharp (F#) and a common time signature (C). The melody is written in a simple, folk-like style. The bass staff provides a harmonic accompaniment with a steady eighth-note pattern. The score is divided into four measures by vertical bar lines. The first measure starts with a treble clef and a key signature of one sharp. The second measure has a key signature change to two sharps (F# and C#). The third measure has a key signature change to one sharp (F#). The fourth measure has a key signature change to two sharps (F# and C#). The score ends with a double bar line.

A musical score for the song 'The Rose Tree'. The score is written for a piano, with a treble and bass staff. The key signature is one sharp (F#), and the time signature is 4/4. The melody is in the treble staff, and the accompaniment is in the bass staff. The melody consists of a series of eighth and sixteenth notes, with a final measure containing a whole note. The accompaniment consists of a series of eighth and sixteenth notes, with a final measure containing a whole note. The score is divided into four measures by vertical bar lines.

A musical score for the song "The Rose Tree". The score is written for a grand piano, with a treble clef on the upper staff and a bass clef on the lower staff. The key signature is one flat (B-flat), and the time signature is 3/4. The melody is primarily in the treble staff, featuring a series of eighth and sixteenth notes. The bass staff provides a simple harmonic accompaniment with chords and single notes. The score includes a repeat sign at the end of the first line of music.